

An aerial photograph of Madison, Wisconsin, taken at sunset. The sun is low on the horizon, casting a warm, golden glow over the city and the water. The city buildings are visible on the left, and the water of Lake Monona is on the right. Several sailboats are scattered across the water. The text 'University of Wisconsin Madison Division of Extension' is overlaid in white, bold, sans-serif font in the center of the image.

University of Wisconsin Madison Division of Extension

Karl Martin, Dean and Director





The University of Wisconsin–Madison is a public land-grant institution established in 1848.



QUICK FACTS ABOUT UW-MADISON



Campus: 938 acres

Annual Budget: \$3,417,500,000

Research expenditure rank: 8th

Schools and colleges: 13

Faculty and staff: 24,186

Total Number of Students:
45,540

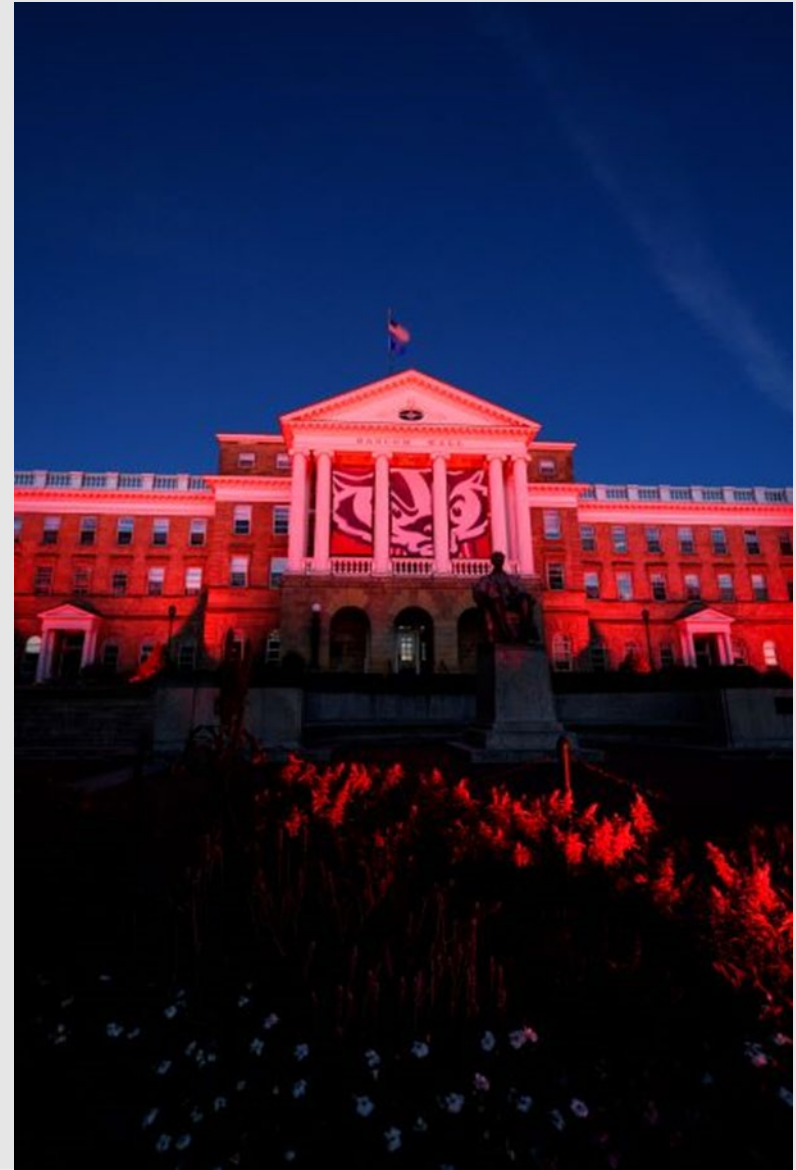
International Students abroad
2,410

Degrees awarded, 2019–20

Bachelor's: 7,459

Master's: 2,314

Doctorates: 1,340



MISSION



To create, integrate, transfer, and apply knowledge through innovative programs of research, teaching, and public service.

UW–Madison is the flagship campus of Wisconsin’s state university system.

The Wisconsin Idea: A longstanding tradition that defines the boundaries of the university as the boundaries of the state and beyond.

13 ACADEMIC UNITS



- Division of Continuing Studies
- **Division of Extension**
- School of Human Ecology
- School of Pharmacy
- School of Medicine and Public Health
- School of Veterinary Medicine
- School of Nursing
- Law School
- Business School
- School of Education
- College of Engineering
- College of Ag and Life Sciences
- College Letters and Science



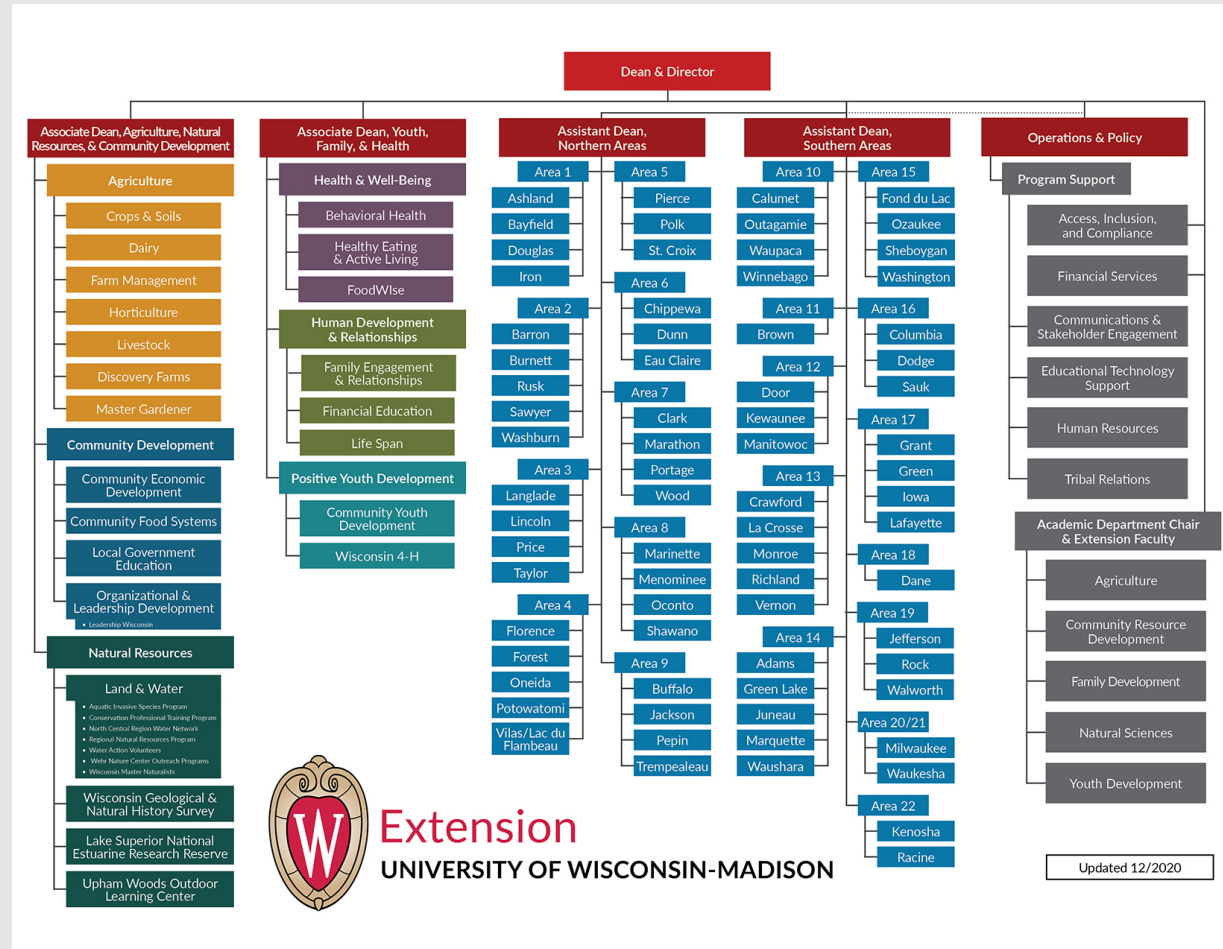


EXTENSION STRUCTURE

• Two Program Areas

- Agriculture, Community Development, and Natural Resources
- Health & Well-Being, Human Development & Relationships, and Positive Youth Development
- Programs such as 4-H, Master Gardener, Master Naturalist, Local Government Education, FoodWise

• Areas representing counties and tribes



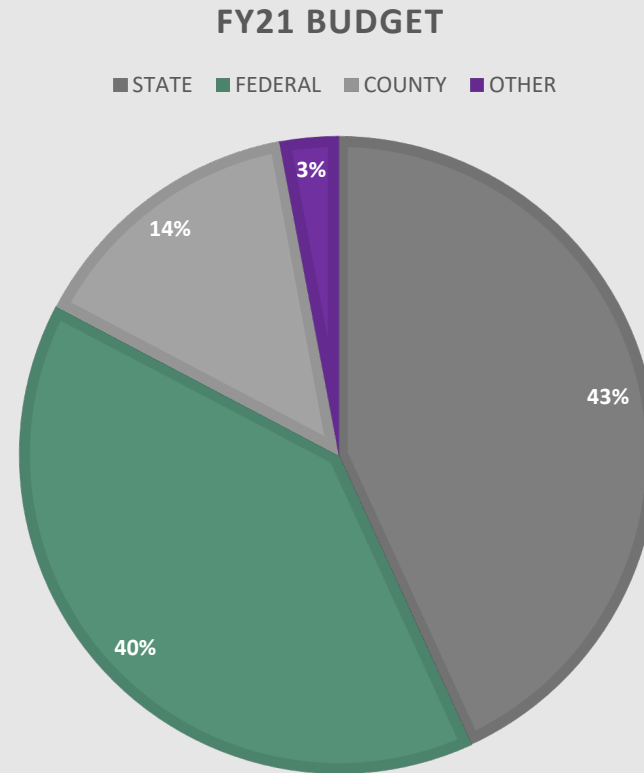
Extension
UNIVERSITY OF WISCONSIN-MADISON

Updated 12/2020

EXTENSION BUDGET



- Budget consists of three main funding sources:
 - State allocated funds
 - Increased by \$1M on 7/1
 - Federal allocated funds
 - 17% - Smith-Lever
 - County and Tribal contractual funds
- “Other” consists of small grants, gifts and program revenue



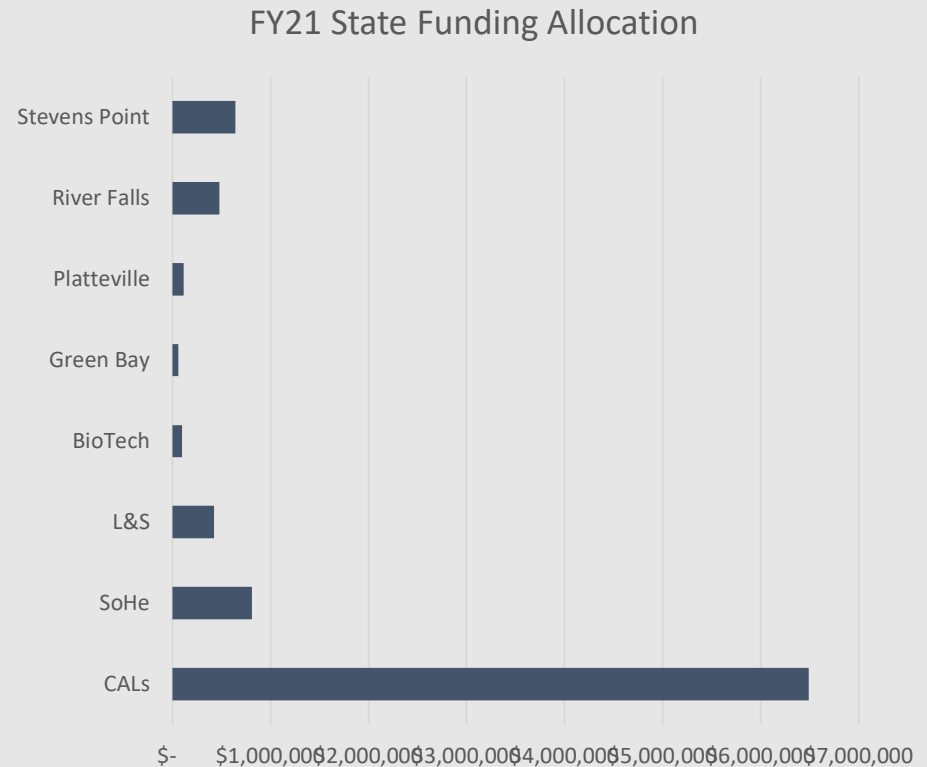
4-YEAR CAMPUS PARTNERS



INSTITUTION PARTNERS



- 40% of state funding is allocated to campus partners
- Partners include four units at UW-Madison and four units off campus
- Relevant Extension research and programming is performed by integrated specialists



Complex External Partnerships/Politics



- NIFA
- NRCS
- DNR
- DATCP
- DHS
- Counties (71)
- Tribes (5)
- WCA
- Ag Coalition
- Governor's Office
- Legislature

FINAL POINTS TO CONSIDER



- Extension on campus
 - Integrated with research and community engagement
 - Critical component of the “Wisconsin Idea”
 - Moving forward we need to broaden engagement
- Smith Lever capacity funds are critical
 - Matched 5:1
 - Allows leveraging with nonfederal partner funding
 - Supports national initiatives and cross state partnerships
 - Capacity vs. competitive – both needed
- Partnerships
 - Essential – but need to align with mission
 - Need constant caretaking
 - Increase efficiency
 - Need to avoid political aspects

THANK YOU

