

NDSU NORTH DAKOTA AGRICULTURAL EXPERIMENT STATION

Greg Lardy, Vice President of Agricultural Affairs

Director of NDAES

Director of ND Extension

Dean of the College of Agriculture, Food Systems, and Natural Resources

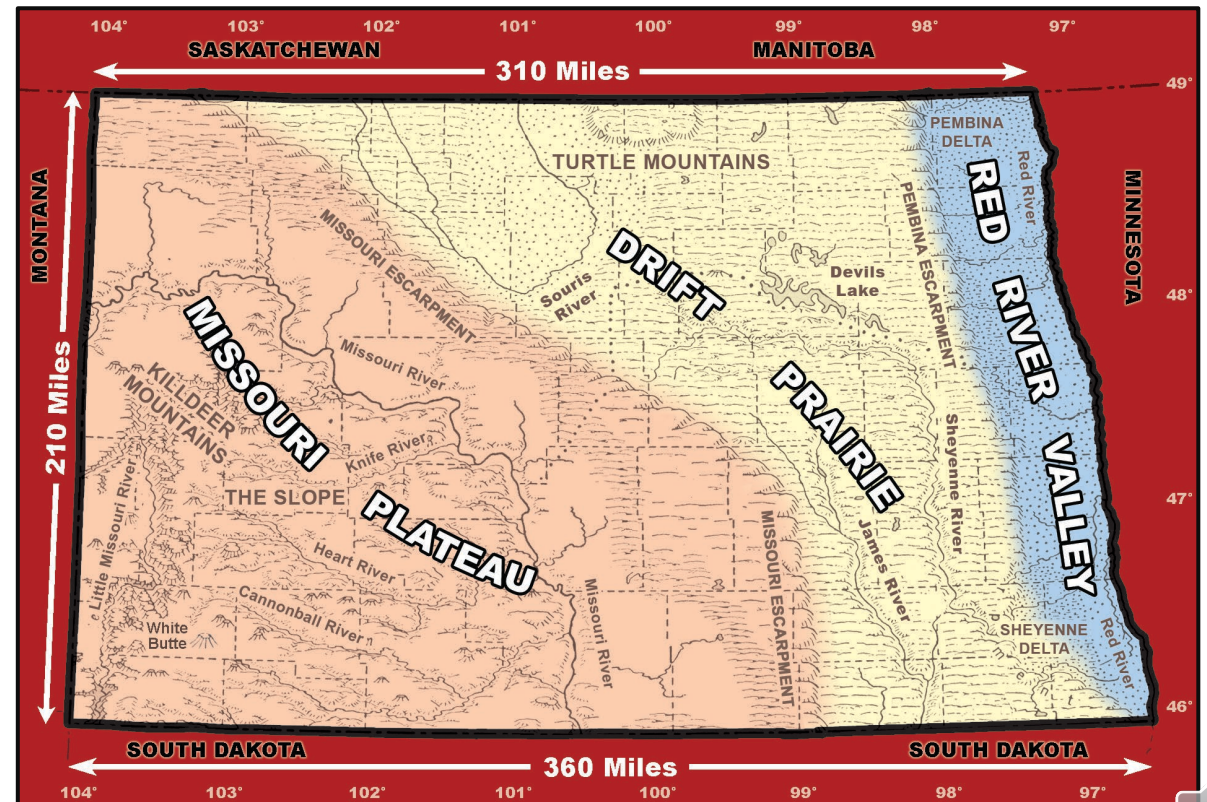
Frank Casey, interim Associate Director of the NDAES

Jane Schuh, Director of Special Initiatives for Agricultural Affairs



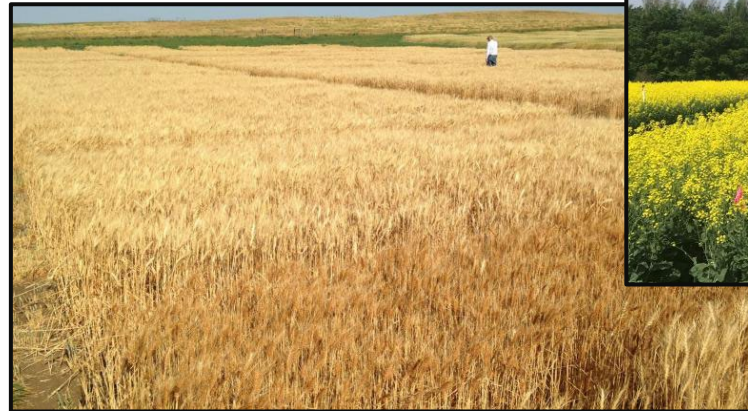
North Dakota: Agricultural diversity

- Diversity of soils and climates
- 39.3 million acres used for ag (90%)
- 42 commodities
 - Durum wheat and spring wheat
 - Dry beans
 - Canola
 - Flaxseed
 - Honey
- \$7.6B in ag cash receipts



NDSU's state-wide research and extension network

- Main station – NDSU, Fargo
- Research Extension Centers (7 across the state, plus agronomy seed farm)
- Extension agents in all 53 counties



State advocacy for Agriculture

- SBARE: State Board of Agricultural Research and Education



- Broad membership/
many perspectives
- Prioritize agriculture
needs and develop
budget requests
- Builds trust with the
state legislature
- Strong state support
for agriculture



Regional and national advocacy for Agriculture

- ND University System
- Neighboring agricultural states
- Public-private partnerships
- Federal advocacy and collaborations

