



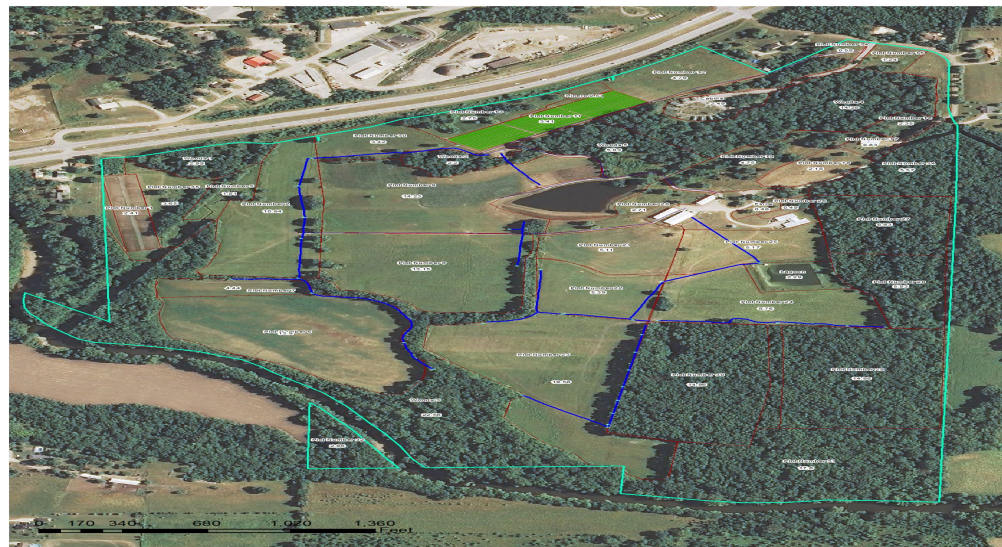
LGU2U SESSION II

College of Agriculture, Environmental and
Human Sciences

Majed El-Dweik, Dean and 1890 Director



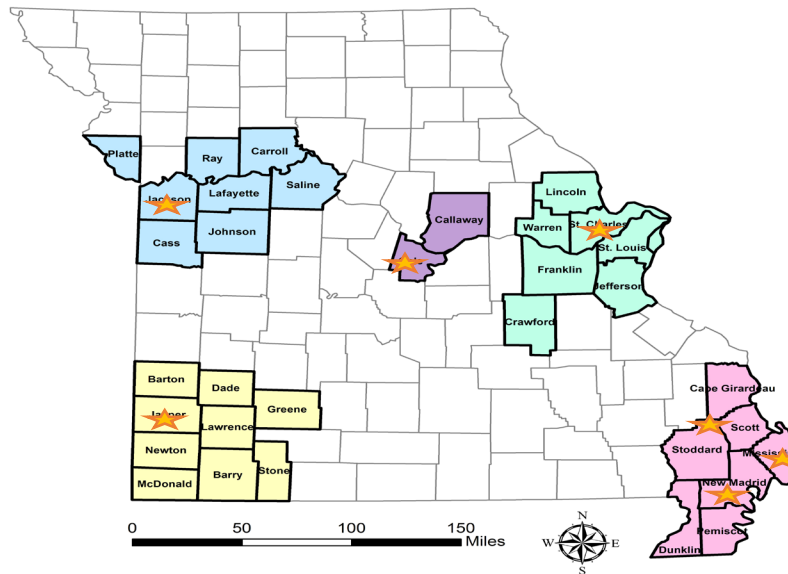
Soldier's Memorial



Certified Organic-Busby Farm



Conventional-Carver Farm



Programs in Missouri Counties

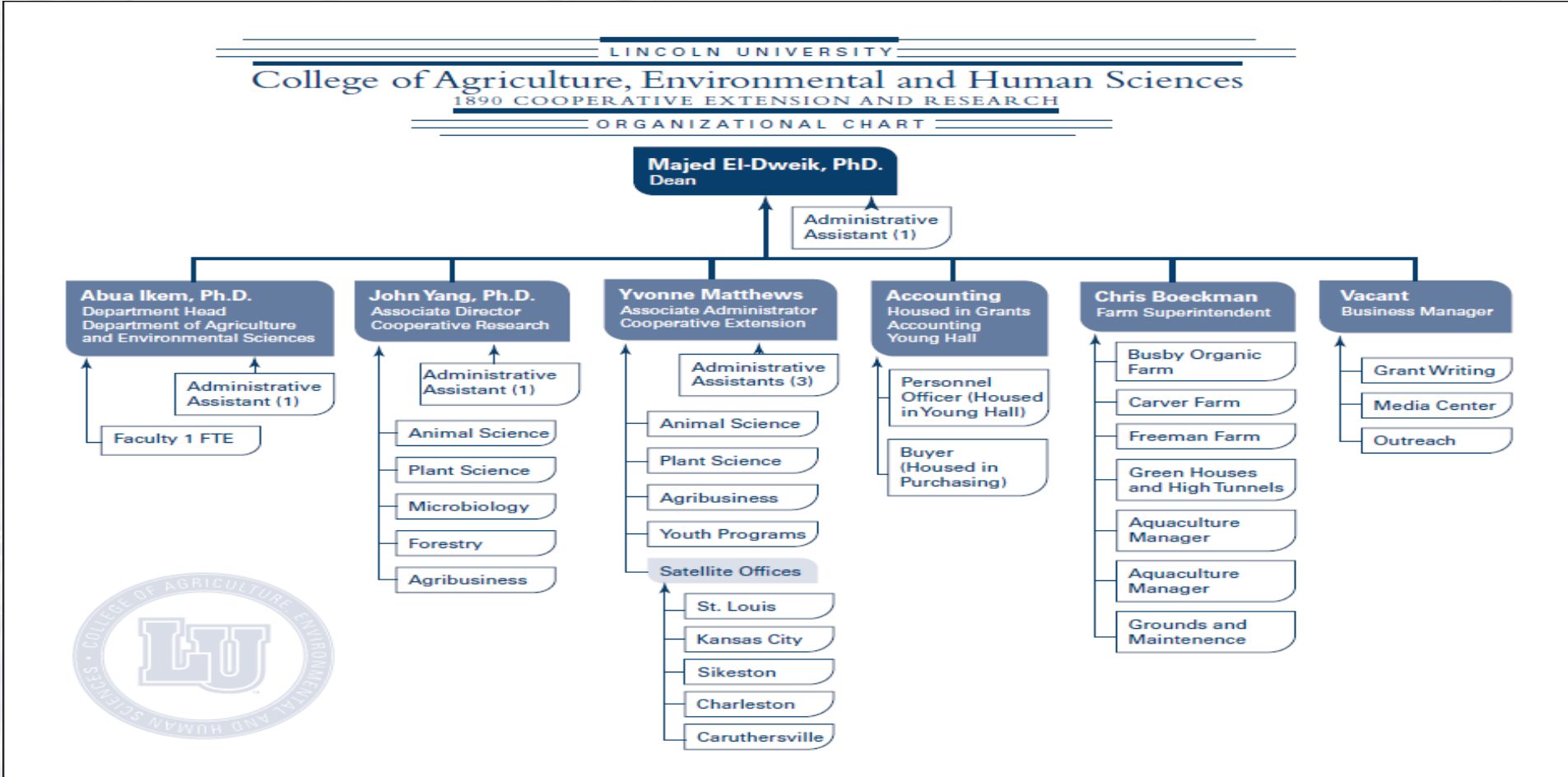


Aquaculture Facility



TM

College Organizational Chart



Capacity Fund from USDA-NIFA

- Critical issues of research and extension - alignment with stakeholders needs
- Examples:
 - STEM and STEAM programs for youth with agriculture emphases
 - Industrial hemp
 - Aquaculture
 - Sensor and Biosensors Development for Food safety
 - Water quality and Soil health
 - GIS and Artificial Intelligence



Financial Support Needs

- Dean and 1890 Director – capacity fund, facility fund, 1890 scholarship, and other funding sources
- Strategic Partnerships – Finance office, Purchasing, Building and facility
- Finance office: (Almost daily communications)
 - Fiscal budget approval for research and extension based on plan of work
 - Monthly statement to each department
 - Quarterly meeting with associate director of research, associate administrator of extension and director of finance
 - Time and effort monthly report
- Building and facility:
 - Meet frequently to address projects progress and maintenance



Financial Challenges and Successes

- **Challenges:**
 - **State match and in-kind**
 - **Purchasing approval process**
- **Successes:**
 - **Thanks to USDA-NIFA for building our capacity**
 - **1862 and 1994 collaborations**
 - **1890 Centers of Excellence**
 - **Extramural fund - \$11,911,447.78**
 - **Pending proposals \$16,414,495.00**
 - **Patent technology with 1862**



TM

Thank You



& LGU2U



TM