



United States
Department of
Agriculture

National Institute
of Food
and Agriculture

www.nifa.usda.gov
@USDA_NIFA



BIOENERGY, CLIMATE,
AND ENVIRONMENT



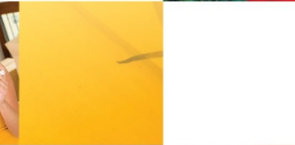
FOOD PRODUCTION
AND SUSTAINABILITY



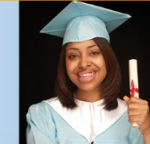
YOUTH, FAMILY,
AND COMMUNITY



FOOD SAFETY
AND NUTRITION



INTERNATIONAL
PROGRAMS



OGFM Overview to The Land Grant University to You Initiative

USDA NIFA

NATIONAL INSTITUTE OF FOOD AND AGRICULTURE

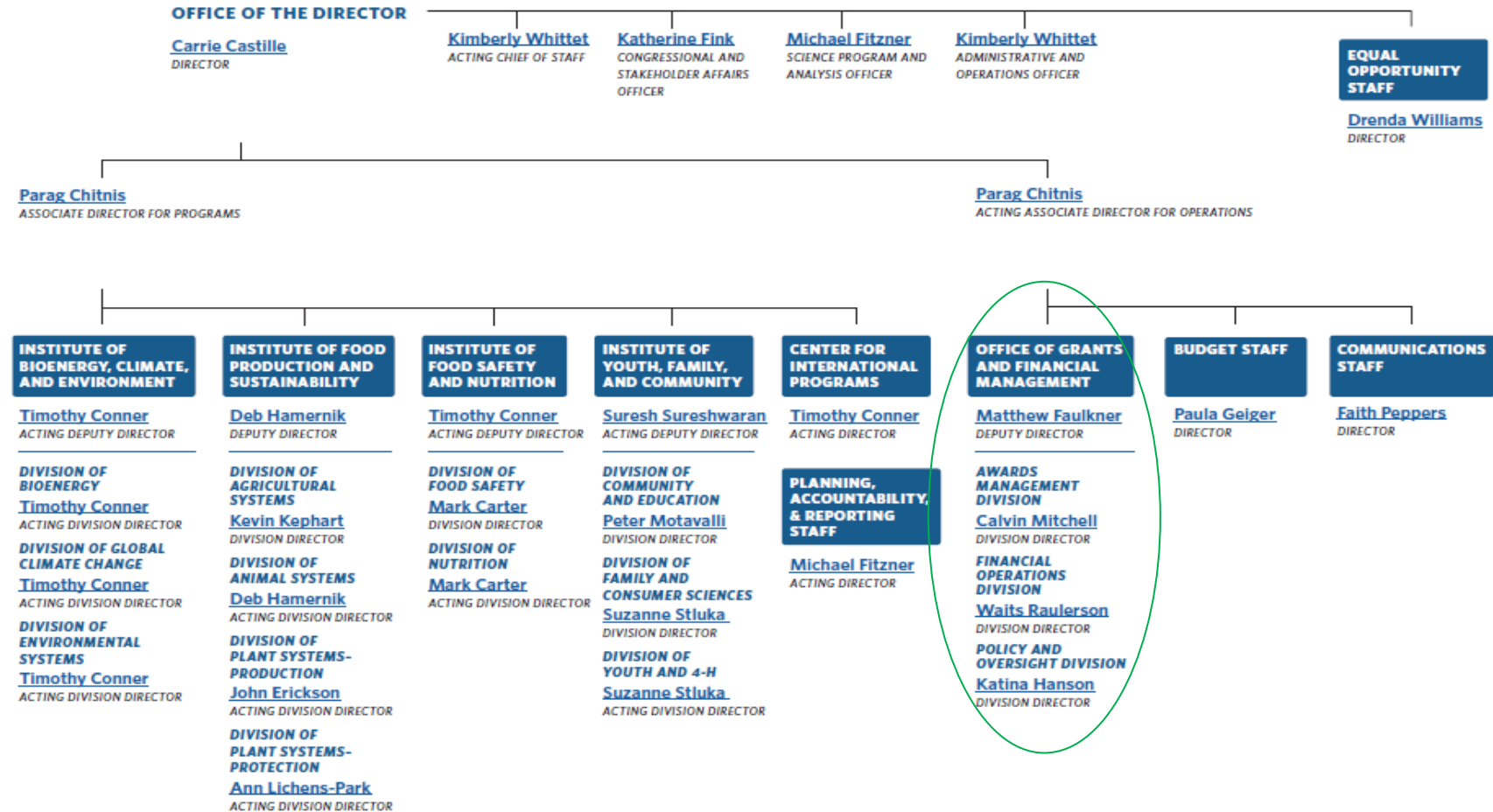
One Agency, Two Locations

- NIFA Operations located at 805 Pennsylvania Ave, Kansas City, MO
- Small Washington, DC staff located at the USDA Whitten Building





The Organization of USDA'S NATIONAL INSTITUTE OF FOOD AND AGRICULTURE — 03.05.2021

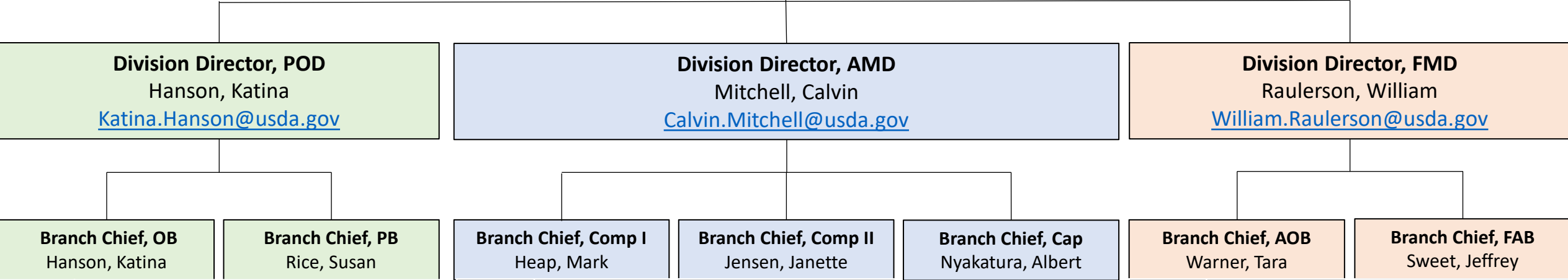




Office of Grants and Financial Management

Deputy Director, OGF
Faulkner, Matthew
Matthew.Faulkner@usda.gov

- 1. Thomas, Crystal; Admin. Officer
Crystal.Thomas2@usda.gov
- 2. Lewman, Kylee; Secretary
Kylee.Lewman@usda.gov



POD Policy and Oversight Division

OB Oversight Branch

PB Policy Branch

AMD Awards Management Division

Comp Competitive Branch (I & II)

Cap Capacity Branch

FMD Financial Management Division

AOB Accounting Operations Branch

FAB Financial Analysis Branch

Policy and Oversight Division Functions

Develops and evaluates efficacy of Department-wide and NIFA policies for the administration of Federal Assistance awards

Policy Branch

- Request for Applications (RFA)
- Regulations, Analysis and Directives
- Business Process and Customer System Interactions

Oversight Branch

- Compliance
- Internal Controls
- Audits Coordination
- Indirect Costs

Awards Management Division Functions

Manages all elements of the grant life cycle for NIFA's Federal financial assistance awards by

- Ensuring that NIFA develops enhanced business practices for management and processing of grants and agreements across the agency
- Staying abreast of programmatic, statutory and regulatory requirements
- Determining financial stability and management capability of prospective grantees
- Understanding requirements of NIFA programs
- Researching laws and appropriation language to ensure stewardship of Federal financial assistance
- Developing and maintaining effective relationships with client institutions
- Performing site and/or desk reviews
- Coaching stakeholders on NIFA grant policies procedures



Financial Management Division Functions

Accounting Operations Branch

- Record all obligations, deobligations, and other accounting transactions related to NIFA's Federal Assistance programs, including IAAs
- Authorize all associated payments in Treasury's ASAP system
- Provide analysis and internal/external customer support for those functions

Financial Analysis Branch

- Record all cash transactions related to NIFA's Federal Assistance programs
- Monitor the agency's cash position and trial balance for all Treasury Appropriation/Fund Symbols
- Performs OCFO mandated reporting on the agency's unliquidated obligations, close out of expired awards, and improper payments

Grants Process

The grants process provides an overview of the life cycle for competitive, non-competitive, and capacity grants. Understanding the life cycle of the award process can help you determine actions you may be responsible for within each step and can be a useful planning tool in preparing for Pre-Award, Award, and Post-Award activities.

CHOOSE A GRANT TYPE BELOW TO SEE DETAILS OF THE PROCESS CYCLE

[COMPETITIVE GRANTS PROCESS CYCLE](#)

[CAPACITY AND NON-COMPETITIVE GRANT PROCESS CYCLE](#)



Grant Administration Inquiry Resources

Contact	Inquiry
Awards@usda.gov	Inquiries relating to cost allowability, budget revisions, no-cost extensions, Program Director transfer request, withheld funds questions, and actions required for funds release
CapacityGrantQuestions@usda.gov	Inquires relating to cost allowability, cost sharing and matching, in-kind contributions, Program Director transfer request
ASAPCustomerService@usda.gov	Inquires relating difficulties accessing funding from grantee accounts after award issuance by NIFA
Policy@usda.gov	Inquires relating to statutory requirements and limitations, timeframes for postings for new Request for Applications
IndirectCostInquiries@usda.gov	Inquires relating to expired Indirect Cost Rate Agreements, how to correctly apply indirect cost, what indirect cost rate should be applied
CapacityEquipment@usda.gov	Requests for prior approvals for equipment purchases, construction, and renovations
Formulagrantsforms@usda.gov	Capacity program forms such as SF-425 and other closeout related forms
SM.NIFA.Facilities@usda.gov	Inquires relating to 1890 Facilities awards



United States
Department of
Agriculture

National Institute
of Food
and Agriculture

INVESTING IN SCIENCE | SECURING OUR FUTURE | WWW.NIFA.USDA.GOV

Transformed to serve you better

New NIFA